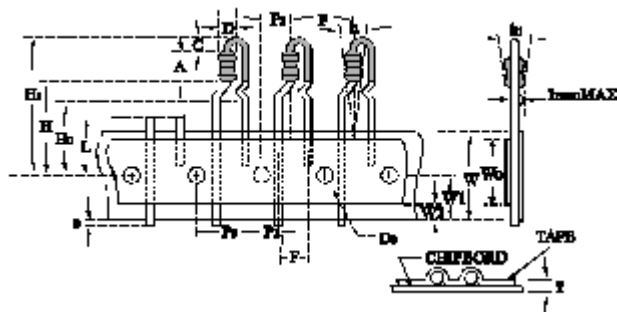
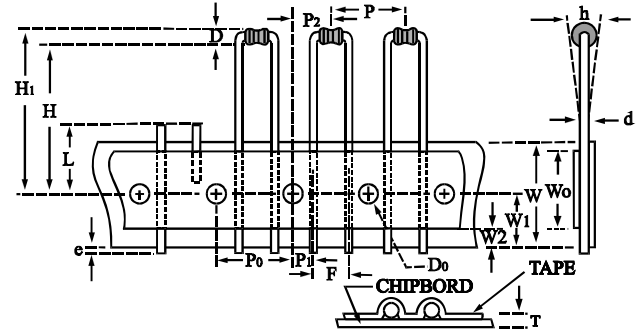
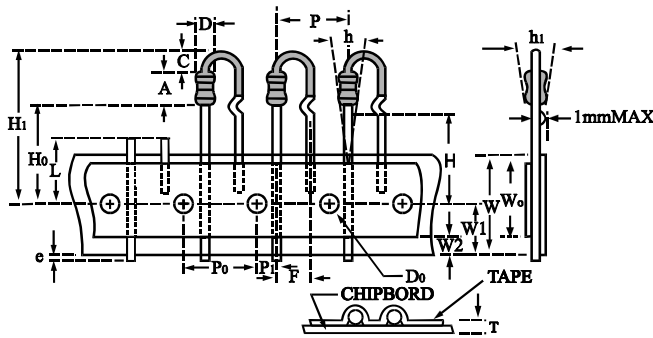


PANA-SERT & AVI-SERT & GOAL POST
RADIAL LEAD TAPING RESISTORS & PACKING SPECIFICATION
PANA-SERT



Description	TYPE	PANA-SERT			
		Dimensions(mm)		Dimensions(Inches)	
		1/4W&1/2WS	1W&2WS	1/4W&1/2WS	1W&2WS
Resistor Body Diameter	D	2.3±0.2	4±0.5	0.090±0.008	0.157±0.020
Resistor Body Length	A	6.3±0.5	11±1.0	0.256±0.020	0.433±0.039
Resistor Pitch	P	12.7±1.0	12.7±1.0	0.500±0.039	0.500±0.039
Sprocket Hole Pitch	PO	12.7±0.3	12.7±0.5	0.500±0.012	0.500±0.020
Sprocket Hole Center To Lead Center	P1	3.85±0.7	3.85±0.7	0.152±0.028	0.152±0.028
Sprocket Hole Center To Resistor Center	P2	6.35±1.0	5.10±1.0	0.250±0.039	0.200±0.039
Resistor Lead Spacing	F	5.0±1.0	5.0±0.8	0.197±0.039	0.197±0.039
Resistor Alignment	h	0±2.0 (0±5 ⁰)		0±0.079 (0±5 ⁰)	
Chipboard Width	W	18 ^{+1.0} _{-0.5}	18.0±0.5	0.709 ^{+0.039} _{-0.020}	0.709±0.020
Hold-Down Tape Resistor	W0	12.0 MIN	12.0±1.0	0.492 MIN.	0.472±0.039
Sprocket Hole Position	W1	9.0 ^{+0.75} _{-0.5}	9.0±0.5	0.354 ^{+0.030} _{-0.020}	0.354±0.020
Hold-Down Tape Position	W2	6.0 MAX.	6.0 MAX.	0.24 MAX.	0.24 MAX.
Height To Bottom Of Resistor	H	19.0±1.0	19.0±1.0	0.748±0.039	0.748±0.039
Height To Lead Clinch	HO	16.0±0.5	16.0±1.0	0.630±0.020	0.630±0.039
Lead Protrusion	e	2.0 MAX.	2.0 MAX.	0.079 MAX.	0.079 MAX.
Sprocket Hold Diameter	DO	4.0±0.3	4.0±0.3	0.157±0.012	0.157±0.012
Thickness (Chipboard And Tape)	T	0.7±0.2	0.7±0.2	0.028±0.008	0.028±0.008
Cutout Length	L	11.0 MAX.	11.0 MAX.	0.433 MAX.	0.433 MAX.
Height Of Resistor	H1	28.5 MAX.	35.5 MAX.	1.122 MAX.	1.398 MAX.
Height Of Bending	C	2.5±0.5	2.5±1.0	0.098±0.020	0.098±0.039
Resistor Alignment	h1	0±2.0 (0±5 ⁰)		0±0.079 (0±5 ⁰)	

Cumulative Pitch Tolerances Not To Exceed±1.0mm(±0.039 In)Over 20 Consecutive Pitches



AVI-SERT

GOAL-POST

Description	TYPE	Dimensions(mm)		Dimensions(Inches)	
		AVI-SERT	GOAL POST	AVI-SERT	GOAL POST
		25&50S	12&25S	25&50S	12&25S
Resistor Body Diameter	D	2.3±0.2	1.8±0.3	0.090±0.008	0.071±0.016
Resistor Body Length	A	6.3±0.5	3.3 ^{+0.4} _{-0.2}	0.256±0.020	—
Resistor Pitch	P	12.7±1.0	12.7±1.0	0.500±0.039	0.500±0.039
Sprocket Hole Pitch	PO	12.7±0.3	12.7±0.5	0.500±0.012	0.500±0.020
Sprocket Hole Center To Lead Center	P1	3.85±0.7	3.85±0.7	0.152±0.028	0.152±0.028
Sprocket Hole Center To Resistor Center	P2	6.35±1.3	6.35±1.0	0.250±0.051	0.250±0.039
Resistor Lead Spacing	F	5.0 ^{+0.8} _{-0.2}	5.0±0.8	0.197 ^{+0.031} _{-0.008}	0.197±0.039
Resistor Alignment	h	0±2.0 [0±5 ⁰]	0±1.0	0±0.079 [0±5 ⁰]	0±0.039
Chipboard Width	W	18.0 ^{+1.0} _{-0.5}	18.0±1.0	0.709 ^{+0.039} _{-0.020}	0.709±0.039
Hold-Down Tape Resistor	Wo	12.0±1.0	12.0±1.0	0.590±0.039	0.472±0.039
Sprocket Hole Position	W1	9.0 ^{+0.75} _{-0.5}	9.0±0.5	0.354 ^{+0.030} _{-0.020}	0.354±0.020
Hold-Down Tape Position	W2	6.0 MAX.	6.0 MAX.	0.24 MAX.	0.24 MAX.
Height To Bottom Of Resistor	H	16.0 ^{+1.0} _{-0.3}	21.0 MAX.	0.630 ^{+0.039} _{-0.012}	0.827 MAX
Height To Lead Clinch	HO	16.0±0.5	—	0.630±0.020	—
Lead Protrusion	e	1.0 MAX.	2.0 MAX.	0.039 MAX.	0.079 MAX
Sprocket Hold Diameter	DO	4.0±0.3	4.0±0.3	0.157±0.012	0.157±0.012
Thickness (Chipboard And Tape)	T	0.7±0.2	0.7±0.2	0.028±0.008	0.028±0.008
Cutout Length	L	11.0 MAX.	11.0 MAX.	0.079 MAX.	0.790 MAX
Height Of Resistor	H1	27. MAX.	32.25 MAX.	1.102 MAX.	1.398 MAX
Height Of Bending	C	3.0 ⁺⁰ ₋₁	—	0.118 ⁺⁰ ₋₁	—
Lead wire diameter	d	—	0.45±0.03	—	0.178±0.012
Resistor Alignment	h1	0±2.0 [0±5 ⁰]	—	0±0.079 [0±5 ⁰]	—

Cumulative Pitch Tolerances Not To Exceed±1.0mm(±0.039 In)Over 20 Consecutive Pitches

PANA-SERT & AVI-SERT & GOAL POST RESISTORS PACKING SPECIFICATION

DIMENSION(mm)	AMMO			REEL				
	A	B	C	A	B	D	W1	W2
(mm)	53	120	325	31	76	312	44	50
Q'TY/BOX	2,000 PCS OR 3,000 PCS			2,500 PCS OR 3,000 PCS				